

Step 1: UNPACK THE BOX CONTENTS

Please gather the items shown in the illustration . You'll need these to complete the procedures that follow. (The following item are also included in the TM-1000 package: TM-1000 Installation Guide.)



TM-1000



Patch Panel



SCSI-3 Cables



North American Power Cord



Two mounting brackets

STEP TWO: OTHER EQUIPMENT YOU WILL NEED

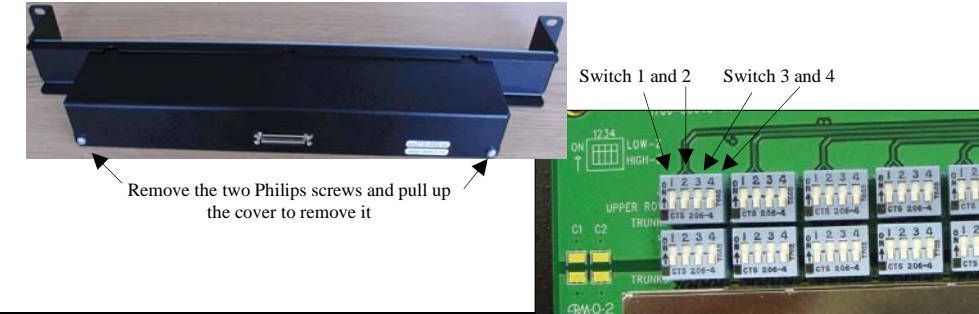
You will need the following equipment to install and set up the TM-1000

- One Server system.
- Control system (Host), any host can be used running one of the following:
 - Windows Server 2003 or XP
 - Solaris 9, 64 bits (Sparc) or Solaris 9, 32 bits (Intel)
 - Linux Redhat Linux Enterprise 4, Kernel 2.6
- One Null Modem DB9 serial cable to connect the TM-1000 serial port to the Windows system serial port (Lines 2 and 3 needs to be crossed). This is required only for IP addresses configuration.
- Two 1Gbps Ethernet adapter.
- Two Gigabit switch (8 ports minimum) for control redundancy
- Four Ethernet cables
- One Power source 110-220V AC, 4 AMP for TM-1000 option AC or one power source – 48V DC, 9 AMP for TM-1000 option DC
- One to 64 x E1/T1/J1 source for monitoring (full-duplex)

STEP THREE: CONFIGURE THE PATCH PANEL IMPEDANCE SWITCH

- Always set the impedance switch as a pair 1-2 and 3-4.
- Patch panels are **shipped** with switch set in **Off position (470 Ω)** as default setting.
- If you set the switch in **Off** position, the input trunk impedance will be high (470 Ω)
- If you set the switch in **On** position, the input trunk impedance will be low (0 Ω)

If you wish to configure the Impedance Switches you must remove the Patch Panel cover. To do this unscrew the screws in the back of the patch panel and gently remove the cover to access the switches.



STEP FOUR: MOUNTING AND CONNECTING THE TM-1000

Mounting the TM-1000

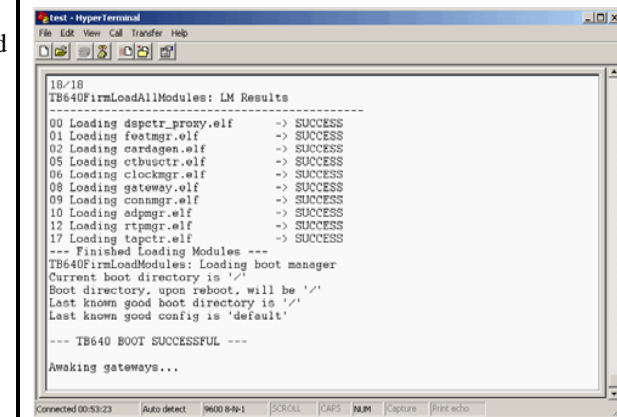
Position the mounting bracket and screw on the side of the switch. Tighten the screw with a Philips screwdriver. Repeat on the opposite side.

Connecting the TM-1000 (See Section 4: TM-1000 Hardware Installation for more detailed information)

1. Connect the SCSI-3 cable between the patch panel and the TM-1000
2. Connect your trunk input with RJ-45 connectors in the patch panel
3. Connect the null Serial cable between the TM-1000 and your server
4. Connect the Ethernet cable from the switch to the TM-1000 ETH-1 and ETH-2
5. Connect the TM-1000 AC or DC power supply, and turn the power on.
6. Configure the IP address and gateway port of the TM-1000

STEP FIVE: SET UP THE TM-1000 IP ADDRESS AND GATEWAY

1. Start the TM-1000 (the fans should make some noise)
2. Use the serial port to communicate between TM-1000 and your server. The following screen should appear:



NOTE: Shipping Default IP address

Eth0: ip address: 192.168.0.2
Eth0: Netmask: 255.255.255.0
Eth0: Gateway: 192.168.0.1
Eth1: ip address: 192.168.0.3
Eth1: Netmask: 255.255.255.0
Eth1: Gateway: 192.168.0.1

3. Use the set_net , set_debug and set_boot commands to set up the IP address and gateway (see Section 6 of the Installation Guide)

STEP SIX: CONTACT TELCOBRIDGES FOR PASSWORD AND LICENSE

Note: Each TM-1000 has its own license and software which is distributed by TelcoBridges. Contact licenses@telcobridges.com with the subject: TM-1000 License and software.

Once you have received the appropriate license and software from TelcoBridges, install the license and software package on the TM-1000 (See Section 5 of the Installation Guide) and load the sample applications

STEP SEVEN: TM-1000 FRONT LED STATUS DESCRIPTION



Item	Color	Description	Item	Color	Description
PWR	None	No power	LNK	None	Not finished to boot
	Red	Power fault		Red	Ethernet port disconnected
	Green	Power good		Green	Ethernet port connected
ACT	None	No trunk allocated	FLT	None	Internal debug status report
	Red	No tapping resource available		Red	Internal debug status report
	Solid Green	Trunk allocated		Green	Internal debug status report
	Blink Green	Trunk activity			

HEAD OFFICE
115-A1 De Vaudreuil,
Boucherville, Quebec,
Canada, J4B 1K7
T +1 450 655 8993
F +1 450 655 9511
info@telcobridges.com
www.telcobridges.com

